

DEFINE, IMPLEMENT, MONITOR, AND EVOLVE your processes and controls with Market Resolve's i⁵ Optimum™ BPM Solution.

Today, business processes involve a variety of people, systems, and information across multiple departments, different lines of business and locations. This fact makes it all the more challenging for companies to adjust to changes that arise due to internal demands, market conditions, client needs or regulatory amendments.

i⁵ Optimum™ provides the groundwork for business process management within an organization by uniting departments, business lines, systems, vendors, and information to improve productivity, performance, control, and agility company-wide. Information is key to controlling these environments, and i⁵ Optimum enhances communication across teams, and from a supervisory perspective.

i⁵ Optimum delivers a unique documentation and control solution that allows organizations to define, implement, monitor and evolve their business rules, processes and workflows for the entire process life cycle.

The software application was specifically designed for the challenges faced by the financial service industry. i⁵ Optimum provides a global view of all operational procedures and workflow control points, clearly articulating potential fails and bottlenecks to management via a desktop dashboard complete with customized reporting.



i⁵ Optimum's Advantages:

- **Business Process Agility**
- **Increased Productivity**
- **Process Improvement**
- **Enhanced Information Flow**
- **Improved Communication**

i⁵ Optimum's Strengths:

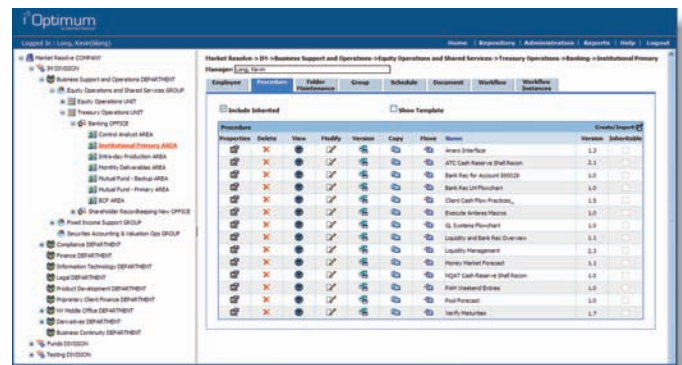
- **Document and Content Interaction** - is used for creating, storing, controlling, editing, approving, searching, publishing, and versioning all forms of documentation such as procedures, manuals, contracts, forms, etc.

- **Basic Connectivity** - using a combination of SQL Integration Services, BizTalk Server and web-service-style protocols and connectors, i⁵ allows process designers/developers to publish and subscribe to system services, choreograph service interaction, and set up bi-directional connections to various back-end business applications.

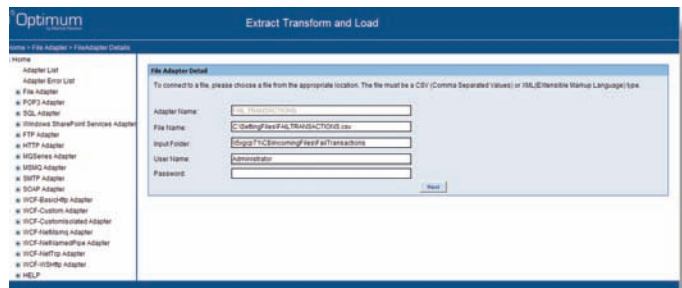
- **BAM and Business Event Support** - offers real-time dashboard monitoring, alerts, and reporting tools on current and changing business operation behaviors.

- **Business Rule Management** - the workflow engine is integrated with the Microsoft BizTalk business rules to generate and execute business policies and decisions. This integration supports effective dating and rule versioning for both its workflow and business rules engines.

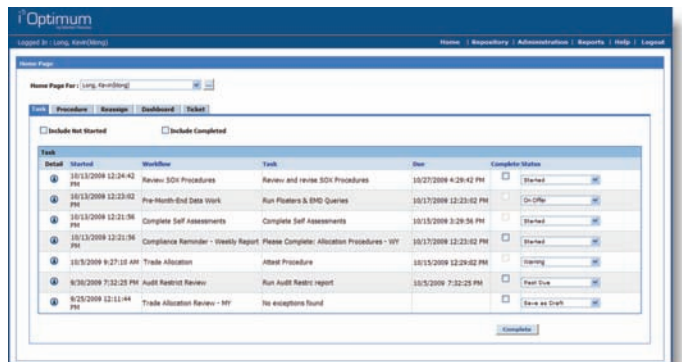
- **Process Component Repository** - has the ability to store all process definitions, components, models, rules and other process metadata which can be browsed and fed to systems.



Core Repository



ETL



Task Page



Dashboard

How Does It Work?

An organization defines and assigns roles (i.e. an administrator, manager, control specialist, compliance officer, analyst, approver, editor, etc). From there, key controls (pre-defined procedures and organizational structures) are imported or created on i⁵ Optimum.

Key controls and procedures can be uploaded into i⁵ Optimum from any format. The end result is comprehensive procedural documentation for the organization, the ability to assign tasks, monitor workflow controls, and track major activities and actions using a simple dashboard interface.

We let our clients decide how much or how little they want to monitor through flexible and customizable dashboard views. User-defined notifications alert managers of pertinent issues, and users are sent reminders of required tasks and updated business rules.

Real-Time Results

As an all-in-one financial services application, i⁵ Optimum continuously monitors and tracks the vital control points of an organization by monitoring process and workflow, allowing management to keep an eye on the bigger picture. Uniquely positioned for real-time updating, i⁵ Optimum dynamically evolves with procedural shifts and business changes your company faces on a day-to-day basis. This enables a business to run smoothly, and allows for automatic distribution of updated information as policies and regulations are modified.

i⁵ Optimum deploys the procedures and associated tasks defined by your business structure. The application integrates fully with legacy systems to provide cross-platform and global support, supplying real-time updates on potential issues and alerting users of any critical stoppage in workflow. This approach allows businesses to make the most informed decisions, mitigate risk, and respond to their team in a timely manner without bottlenecks.



Example of Dashboard available in i⁵ Optimum

Aged Details

Control #	Location	# of Accts	Total Fail Items	Total Fail Value	Largest Fail	
	all	33	84	18249000	23000000	
10270001250	Beijing					
	Dubai	3	7	4500000	25000000	
10270001245	Dublin	8	14	22000000	6000000	
	Hong Kong					
LO15120900001	London	Not a critical account	11.00	11.00	11.00	
10270001242	Madrid		7	11	16240000	41130000
10270001225	Milan		13	17	20000000	7285000
10270001239	Rio		9	19	28760000	7670000
10270001234	Santiago		4	7	17876000	5254000
	Seoul					
	Sydney					
	Tokyo					
10270001240	Zurich	6	9	11567000	2050000	

Task Details

Location: London

Task Name: Audit

Control Number: 10270001250

Task Value: 11.00

Largest Fail Item: 11.00

Number of Fail Items for Account: 1

Attachments

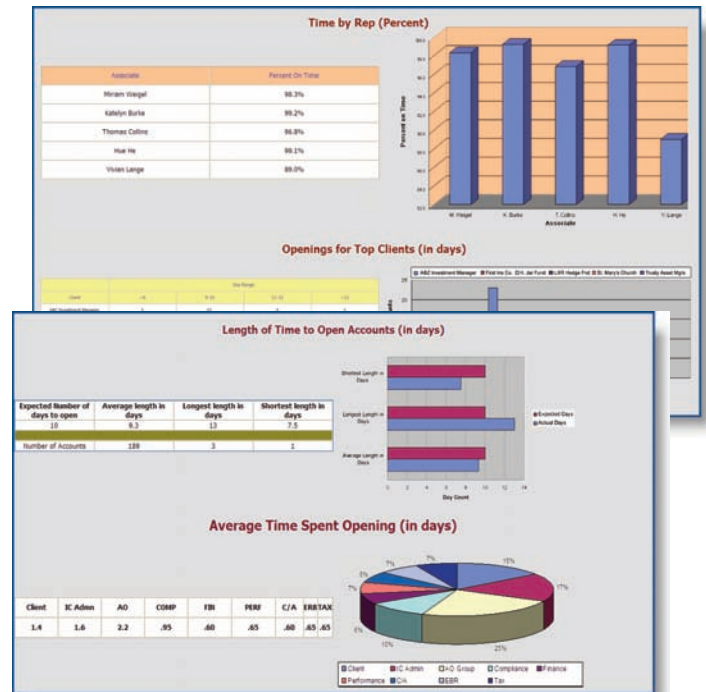
Transaction Number	Year	Counterparty	Product	Transaction	Settlement Date	Legal	Office	Customer	Customer Group	ESB Date	Fail Type	Settlement	Fail Amount	Rec'D	Fail Reason	Failure	Reopen/Fail
101	2017	0211	890	SEI	USD	01	14	HE	HE	10/14/2018	Remaining	1000000	1000000	10/14/2018	Failed/Not as Test		
102	2017	01028	820	SEI	USD	02	14	HE	HE	10/14/2018	Remaining	40000	40000	10/14/2018	Failed/Not as Test		
104	2017	01042	890	SEI	EUR	02	14	HE	HE	10/14/2018	Remaining	40000	40000	10/14/2018	Failed/Not as Test		
105	2017	01050	890	SEI	EUR	02	14	HE	HE	10/14/2018	Remaining	20000	20000	10/14/2018	Failed/Not as Test		
106	2017	01052	018	SEI	USD	02	14	HE	HE	10/14/2018	Remaining	40000	40000	10/14/2018	Failed/Not as Test		
108	2017	01038	890	SEI	USD	01	14	HE	HE	10/14/2018	Remaining	3000	3000	10/14/2018	Failed/Not as Test		
109	2017	01047	820	SEI	USD	01	14	HE	HE	10/14/2018	Remaining	3400	3400	10/14/2018	Failed/Not as Test		
101	2017	01028	820	SEI	USD	01	14	HE	HE	10/14/2018	Remaining	4000	4000	10/14/2018	Failed/Not as Test		
102	2017	01028	820	SEI	USD	01	14	HE	HE	10/14/2018	Remaining	20000	20000	10/14/2018	Failed/Not as Test		
102	2017	01048	820	SEI	USD	04	14	HE	HE	10/14/2018	Remaining	200	200	10/14/2018	Failed/Not as Test		

Intelligent Implementation

i⁵ Optimum stores valuable information in a centralized, controlled repository that sits securely behind a your fire-wall, or in a protected ASP or SaaS environment.

It records and tracks all actions to allow for accessible audit trails, reporting structures, and investigations. Reports can be generated based on an array of options including individual or application-specific activity. The reporting structure set-up reduces the time and money spent on audits. Auditors can easily access specified data from one location and test all procedures, policies, and workflows directly from the application, since all the data is stored centrally and linked to workflow and control points.

To reach an i⁵ Optimum specialist and to find out more about our no obligation demonstrations and 2009 discounts call 212-209-3806.



Example of reports that can be generated using i⁵ Optimum.

Target Environments Required for i⁵ Optimum

System Software

- For all subsystems, Windows Server 2003.
- For web server subsystem, Internet Information Services v5 or later.
- For SQL Server subsystem, Microsoft SQL Server 2003 or 2005.
- For all subsystems, Microsoft .Net Framework V2.0.
- Microsoft Web Services Enhancements 3.0 Runtime.

Third Party Software

BizTalk Server 2006 may be required for certain configurations.

Scalability

Assuming a starting point of a single processor box running all the i⁵ Optimum subsystems, scaling up can be done in a number of ways, both vertically and horizontally.

Vertical Scaling

- Adding RAM or more/faster processors to each box.
- Using dual-core or 64-bit processors.
- Adding a fast SAN storage solution to the SQL Server box.

Horizontal Scaling

- Having separate boxes for the various i⁵ Optimum subsystems – web server, SQL server and Windows services.
- Having multiple web (IIS) servers, using a load balancing server, and a common server for session state.
- Having multiple database servers, with replicated databases.